

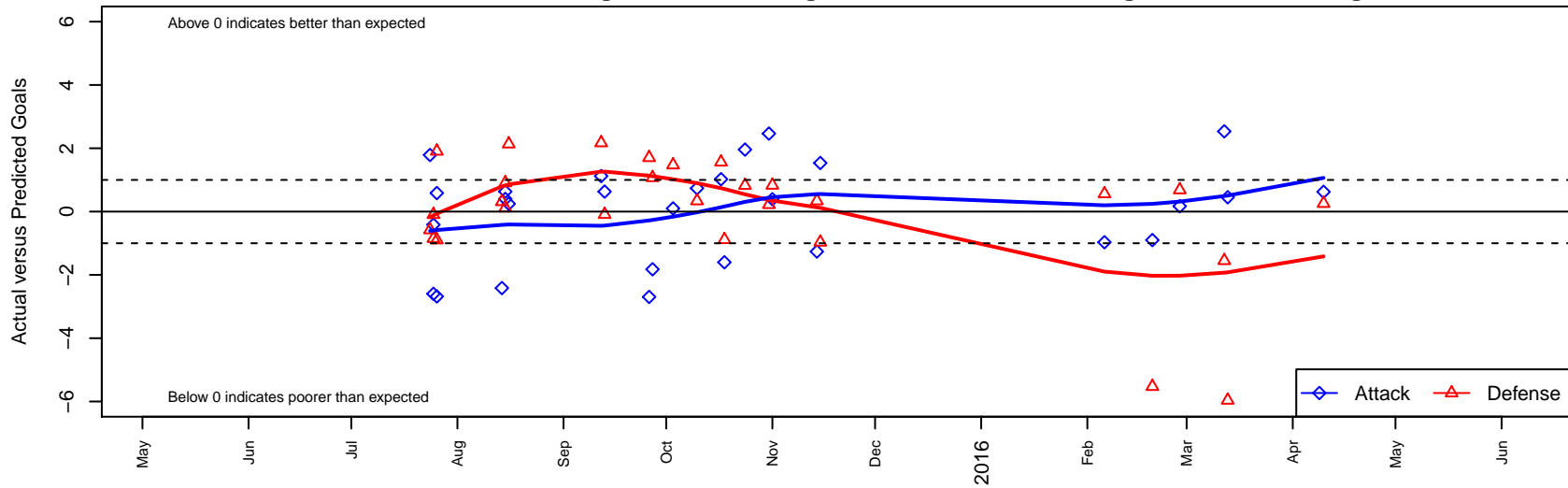
Portland Spartans FC Academy B03

Portland, OR
 B03 total strength=694
 attack=1.57 defense=0.31
 fall league = PTT B03 Premier Silver
 spr league = Spr OYS B03 Premier Green

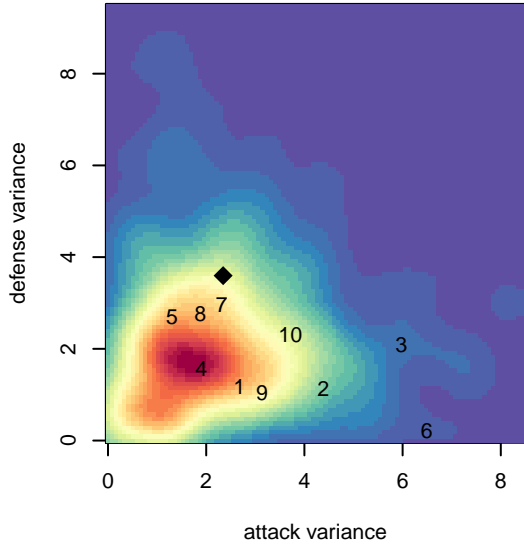
alt names used:
 SPARTANS FC B03 (WA)
 Spartans FC B03
 SFC 03 Boys
 SFC 03 Boys

Venues played:
 2015 Oswego Nike Cup Silver U12
 2015 Mt Hood Challenge U12
 2015 PTT B03 Premier Silver
 2015 Spr OYS B03 Premier Green

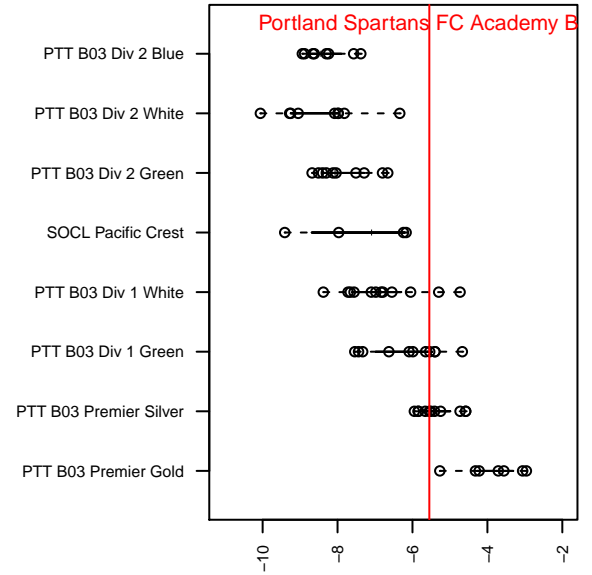
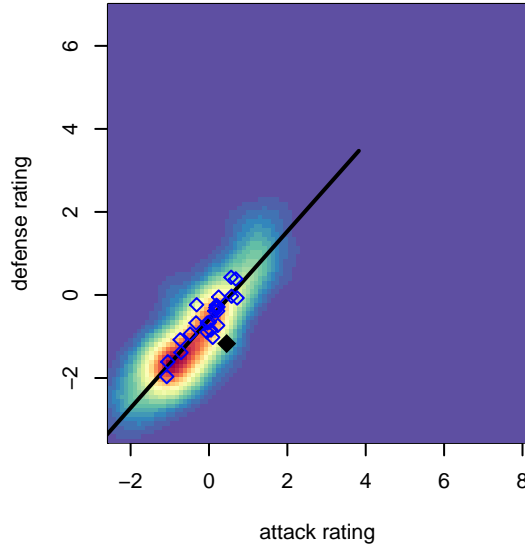
Portland Spartans FC Academy B03
 Dots are actual minus expected GF (blue circles) and GA (red triangles).
 Blue line is smoothed change in attack strength. Red is smoothed change in defense strength.



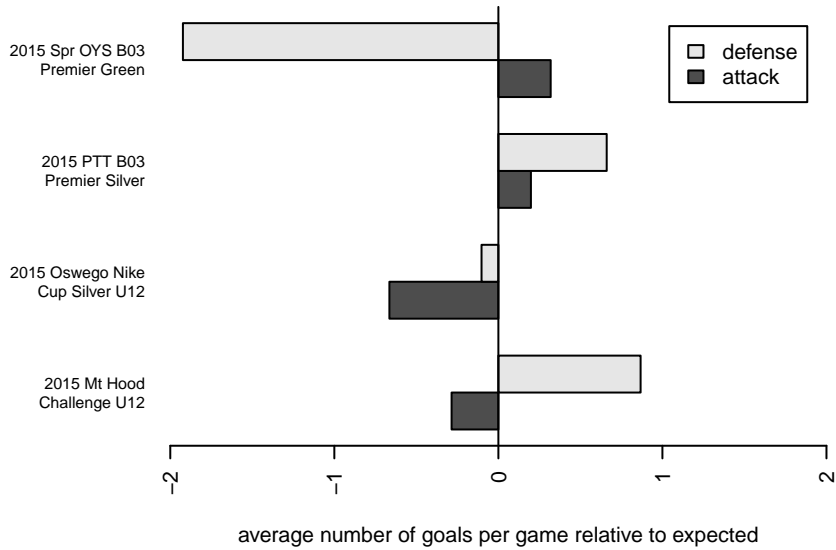
**attack and defense variance (black dot)
relative to other teams
and top 10 in region**



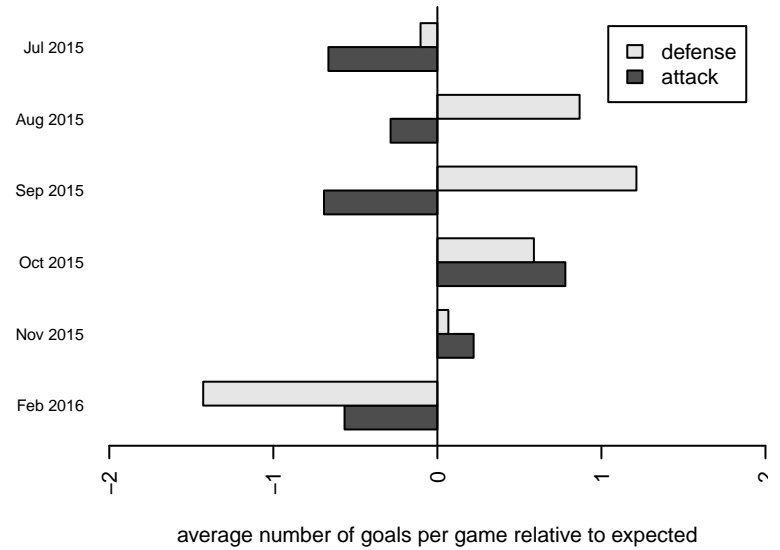
**attack and defense rating
relative to others at age
and all opponents in last 13 months**



Performance relative to 13 month average



Performance relative to 13 month average



| date | home | | away | | venue | pred.home | pred.away |
|------------|-----------------------------------|----|------------------------------------|---|---------------------------------|-----------|-----------|
| 2016-04-10 | Bend FC Timbers Red B03 | 5 | Portland Spartans FC Academy B03 | 2 | 2015 Spr OYS B03 Premier Green | 5.26 | 1.38 |
| 2016-03-13 | PCU Red B03 | 11 | Portland Spartans FC Academy B03 | 2 | 2015 Spr OYS B03 Premier Green | 5.04 | 1.55 |
| 2016-03-12 | FC Portland Navy B03 | 5 | Portland Spartans FC Academy B03 | 4 | 2015 Spr OYS B03 Premier Green | 3.45 | 1.47 |
| 2016-02-28 | Portland Spartans FC Academy B03 | 1 | Crossfire Oregon Green I B03 | 5 | 2015 Spr OYS B03 Premier Green | 0.83 | 5.68 |
| 2016-02-20 | Portland Spartans FC Academy B03 | 1 | NEU PDX White B03 | 9 | 2015 Spr OYS B03 Premier Green | 1.90 | 3.47 |
| 2016-02-06 | Westside Timbers Copa B03 | 6 | Portland Spartans FC Academy B03 | 0 | 2015 Spr OYS B03 Premier Green | 6.56 | 0.97 |
| 2015-11-15 | Portland Spartans FC Academy B03 | 5 | Aloha United Atletico Black B03 | 4 | 2015 PTT B03 Premier Silver | 3.47 | 3.03 |
| 2015-11-14 | RVSC Timbers Red B03 | 2 | Portland Spartans FC Academy B03 | 2 | 2015 PTT B03 Premier Silver | 2.34 | 3.26 |
| 2015-11-01 | 4-H Manchester U B03 | 2 | Portland Spartans FC Academy B03 | 4 | 2015 PTT B03 Premier Silver | 2.83 | 3.61 |
| 2015-10-31 | Portland Spartans FC Academy B03 | 5 | ETFC Ajax Black -was Blue B03 | 4 | 2015 PTT B03 Premier Silver | 2.54 | 4.22 |
| 2015-10-24 | 4-H FC Joga B03 | 2 | Portland Spartans FC Academy B03 | 5 | 2015 PTT B03 Premier Silver | 2.83 | 3.04 |
| 2015-10-18 | Crossfire Oregon Green II B03 | 3 | Portland Spartans FC Academy B03 | 1 | 2015 PTT B03 Premier Silver | 2.11 | 2.60 |
| 2015-10-17 | Portland Spartans FC Academy B03 | 3 | Washington Timbers Red B B03 | 2 | 2015 PTT B03 Premier Silver | 1.98 | 3.56 |
| 2015-10-10 | Portland Spartans FC Academy B03 | 4 | RVSC Timbers Red B03 | 2 | 2015 PTT B03 Premier Silver | 3.26 | 2.34 |
| 2015-10-03 | NEU PDX White B03 | 2 | Portland Spartans FC Academy B03 | 2 | 2015 PTT B03 Premier Silver | 3.47 | 1.90 |
| 2015-09-27 | Portland Spartans FC Academy B03 | 2 | PCU Red 2 B03 | 1 | 2015 PTT B03 Premier Silver | 3.82 | 2.07 |
| 2015-09-26 | Portland Spartans FC Academy B03 | 1 | FC Salmon Creek Juventus White B03 | 0 | 2015 PTT B03 Premier Silver | 3.70 | 1.70 |
| 2015-09-13 | 4-H Cruz Azul B03 | 3 | Portland Spartans FC Academy B03 | 3 | 2015 PTT B03 Premier Silver | 2.91 | 2.37 |
| 2015-09-12 | BSC Portland Black-Legends B03 | 1 | Portland Spartans FC Academy B03 | 4 | 2015 PTT B03 Premier Silver | 3.17 | 2.88 |
| 2015-08-16 | Washington East SC B03 | 1 | Portland Spartans FC Academy B03 | 2 | 2015 Mt Hood Challenge U12 | 3.13 | 1.76 |
| 2015-08-15 | Portland Spartans FC Academy B03 | 3 | 4-H Cruz Azul B03 | 2 | 2015 Mt Hood Challenge U12 | 2.37 | 2.91 |
| 2015-08-15 | Crossfire Oregon Green II B03 | 2 | Portland Spartans FC Academy B03 | 3 | 2015 Mt Hood Challenge U12 | 2.11 | 2.60 |
| 2015-08-14 | FC West Titans B03 | 1 | Portland Spartans FC Academy B03 | 2 | 2015 Mt Hood Challenge U12 | 1.31 | 4.42 |
| 2015-07-26 | Crossfire Oregon LOSC Black I B03 | 2 | Portland Spartans FC Academy B03 | 5 | 2015 Oswego Nike Cup Silver U12 | 1.10 | 7.68 |
| 2015-07-26 | Southside SC Azul B03 | 0 | Portland Spartans FC Academy B03 | 3 | 2015 Oswego Nike Cup Silver U12 | 1.91 | 2.42 |
| 2015-07-25 | WUSC Barcelona Navy B03 | 2 | Portland Spartans FC Academy B03 | 5 | 2015 Oswego Nike Cup Silver U12 | 1.15 | 7.60 |
| 2015-07-25 | Portland Spartans FC Academy B03 | 2 | Southside SC Azul B03 | 2 | 2015 Oswego Nike Cup Silver U12 | 2.42 | 1.91 |
| 2015-07-24 | THUSC Carbon B03 | 2 | Portland Spartans FC Academy B03 | 8 | 2015 Oswego Nike Cup Silver U12 | 1.42 | 6.21 |